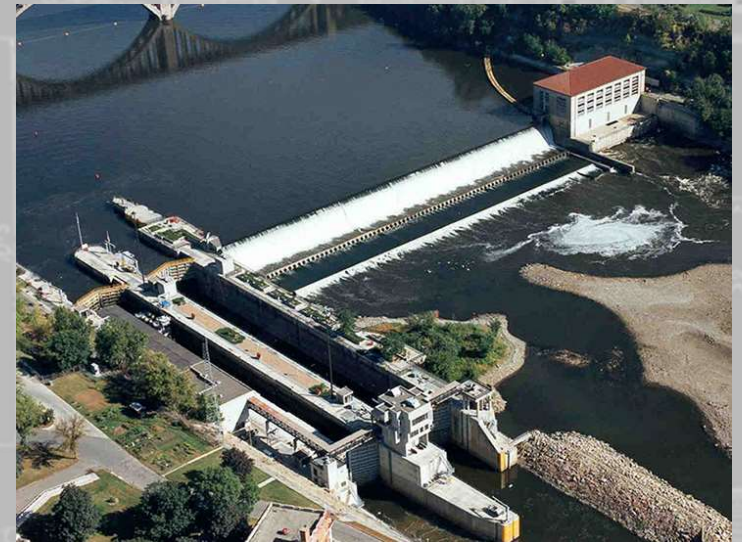


LOWER ST. ANTHONY FALLS AND LOCK AND DAM 1 DISPOSITION STUDY

Public Scoping
October 2022



US Army Corps
of Engineers®





SCOPING MEETING PURPOSE



- The scoping process is the best time to identify issues, determine points of contact, establish project schedules, and provide recommendations to the Corps.
- The overall goal is to define the scope of issues to be addressed in depth in the analyses that will be included in the Environmental Assessment.
- What we want from you today:
 - ✓ Comments on issues you consider to be significant for this study
 - ✓ Information about the sites that we might not have



OVERVIEW

3



To facilitate water-borne commercial navigation Congress directed the construction of Lock and Dam 1 in 1917, Lower St. Anthony Falls Lock and Dam in 1956, and Upper St. Anthony Falls in 1963.

The U.S. Army Corps of Engineers built these three lock projects and continues to operate and maintain them today.

★ *This study is focused on Lower St. Anthony Falls & Lock and Dam 1*





WHY UPPER MISSISSIPPI LOCKS AND DAMS?

4

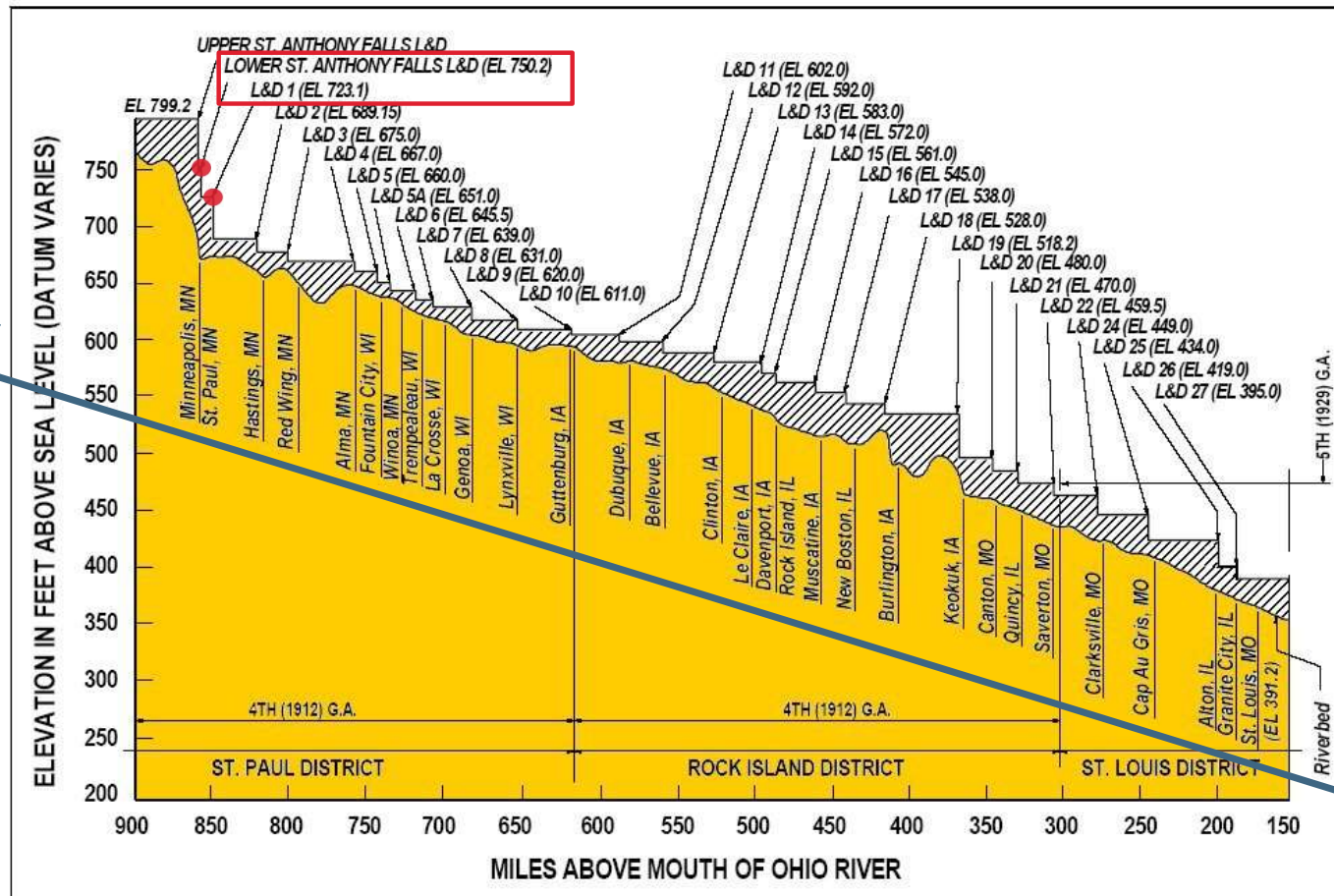


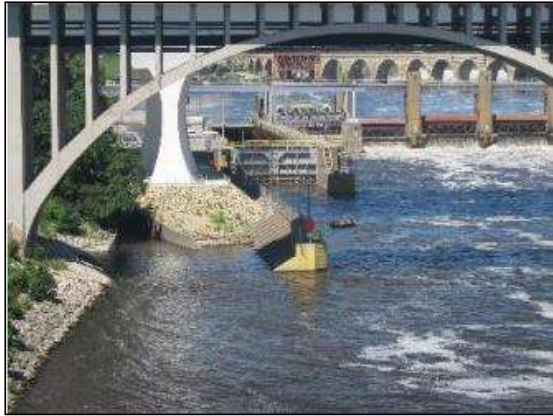
Figure 1 A longitudinal profile of the Upper Mississippi River lock and dam system (Courtesy of Dr. Tasuaki Nakato, University of Iowa, Iowa Institute of Hydraulic Research, Muscatine, Iowa).

Mississippi River
Ends at the Golf
of Mexico



OVERVIEW

5



Lower St. Anthony Falls lock and dam (LSAF)

Primary Purpose:

- Navigation

Secondary Purpose:

- Recreation

Also supports:

- 9 MW Hydropower



Lock and Dam No. 1 (L/D 1)

Primary Purpose:

- Navigation

Secondary Purpose:

- Recreation

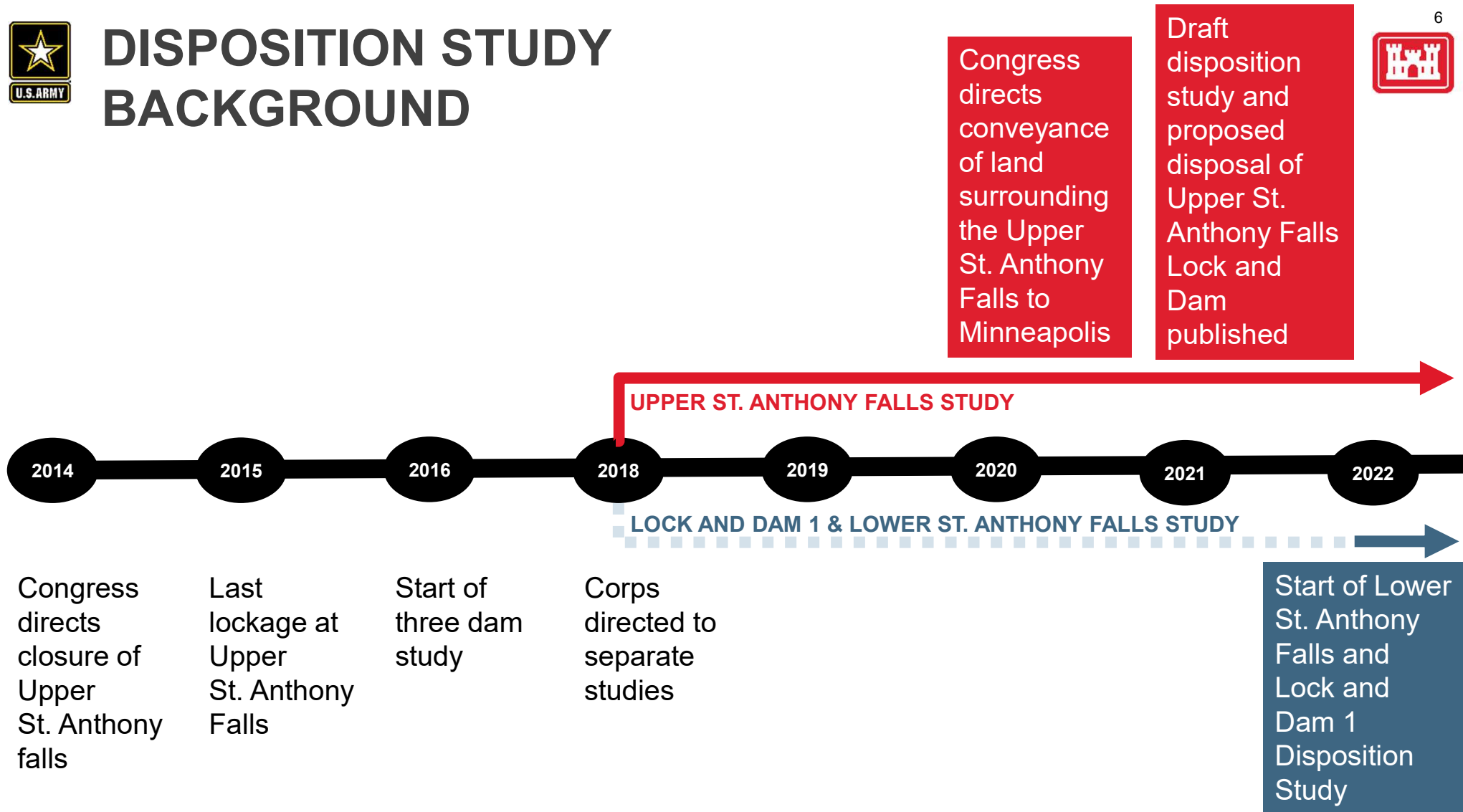
Also supports:

- 14.4 MW Hydropower



DISPOSITION STUDY BACKGROUND

6





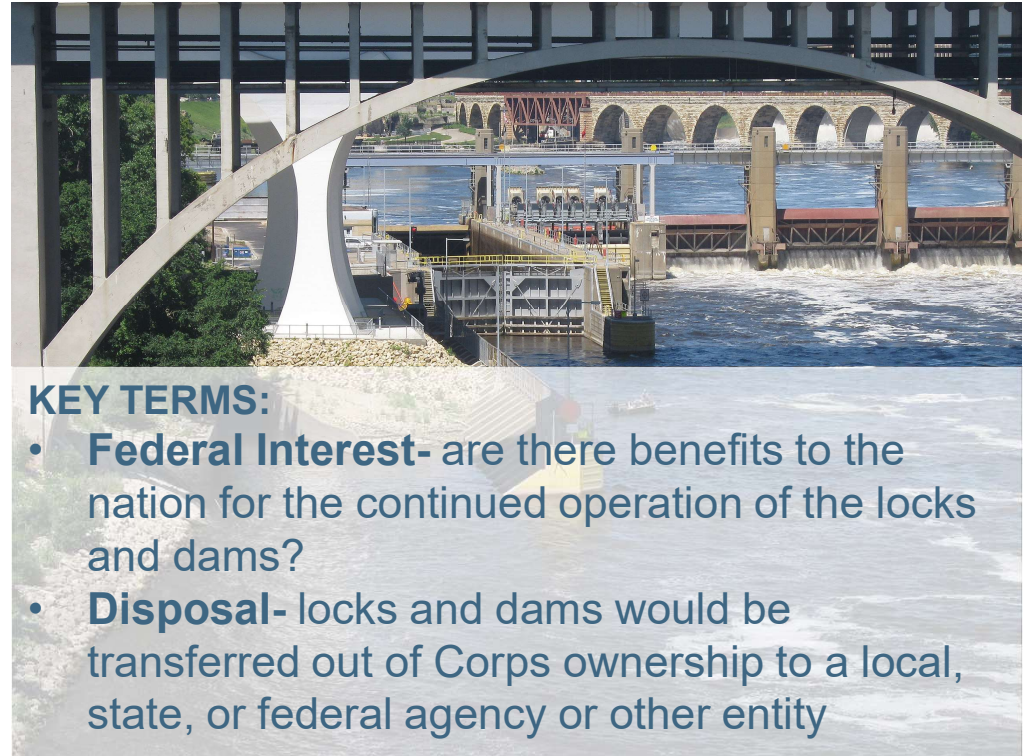
DISPOSITION STUDY PURPOSE



Study Must Answer:

Is there Federal interest in continuing to own and operate the sites?

If not, is there a viable disposal alternative?



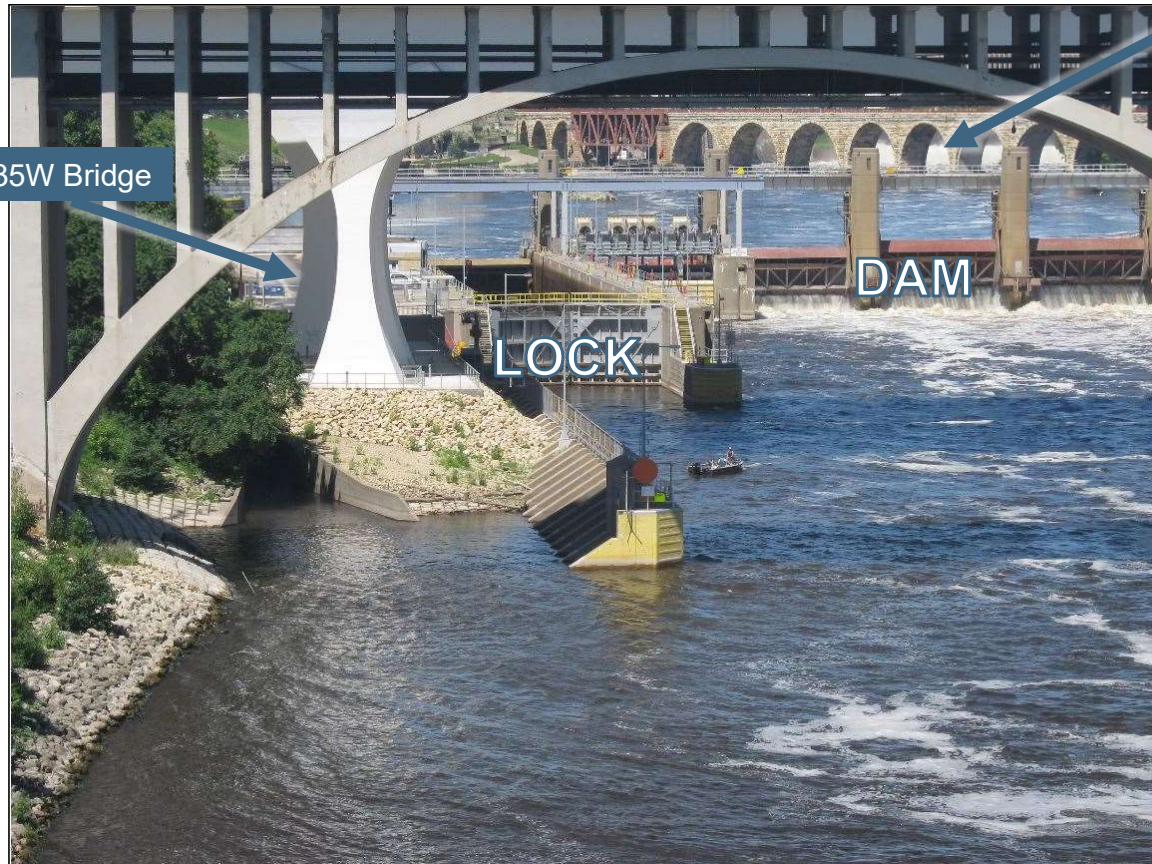
KEY TERMS:

- **Federal Interest-** are there benefits to the nation for the continued operation of the locks and dams?
- **Disposal-** locks and dams would be transferred out of Corps ownership to a local, state, or federal agency or other entity



LOWER ST. ANTHONY FALLS LOCK AND DAM

8



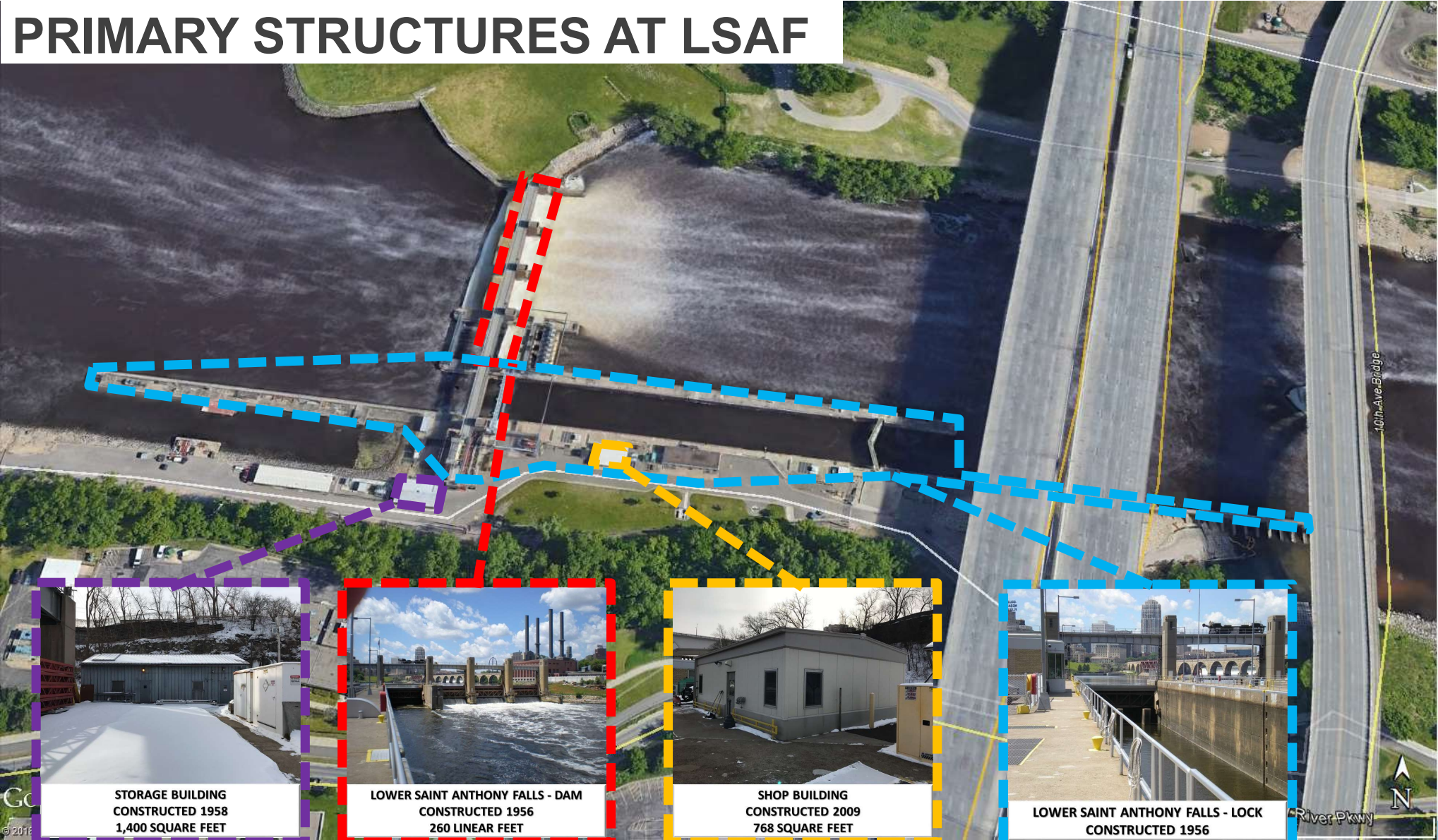
35W Bridge

Stone Arch Bridge

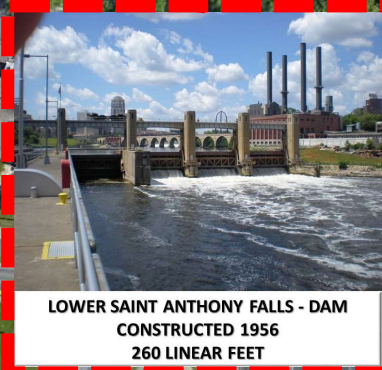
DAM

LOCK

PRIMARY STRUCTURES AT LSAF



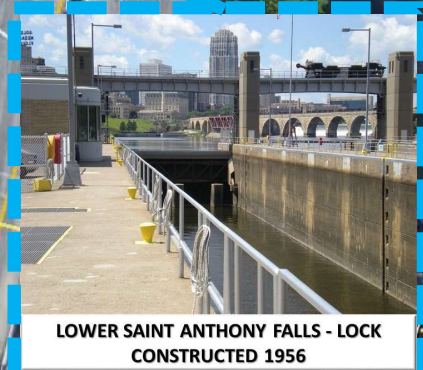
STORAGE BUILDING
CONSTRUCTED 1958
1,400 SQUARE FEET



LOWER SAINT ANTHONY FALLS - DAM
CONSTRUCTED 1956
260 LINEAR FEET

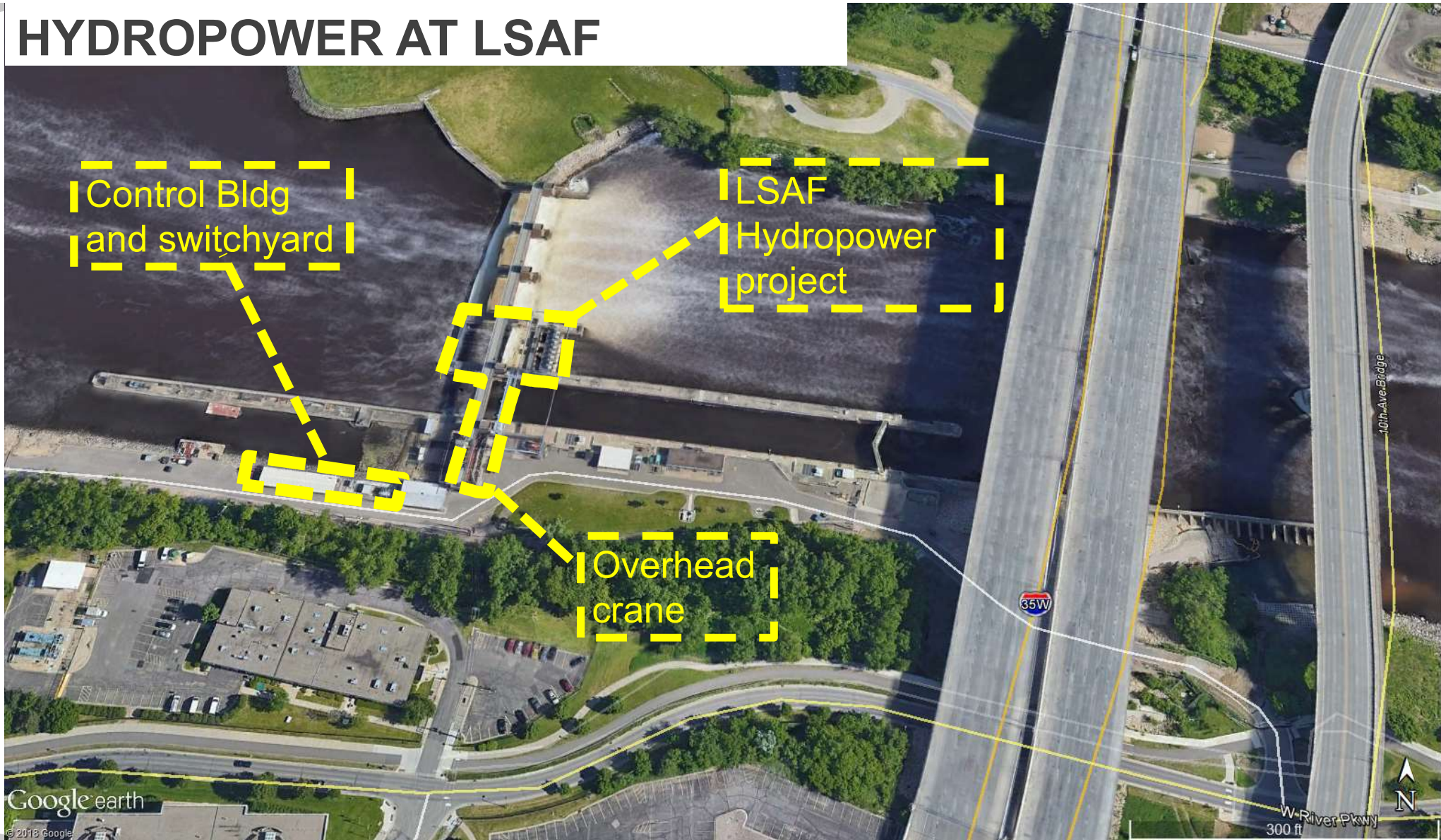


SHOP BUILDING
CONSTRUCTED 2009
768 SQUARE FEET



LOWER SAINT ANTHONY FALLS - LOCK
CONSTRUCTED 1956

HYDROPOWER AT LSAF





LSAF STATUS

11

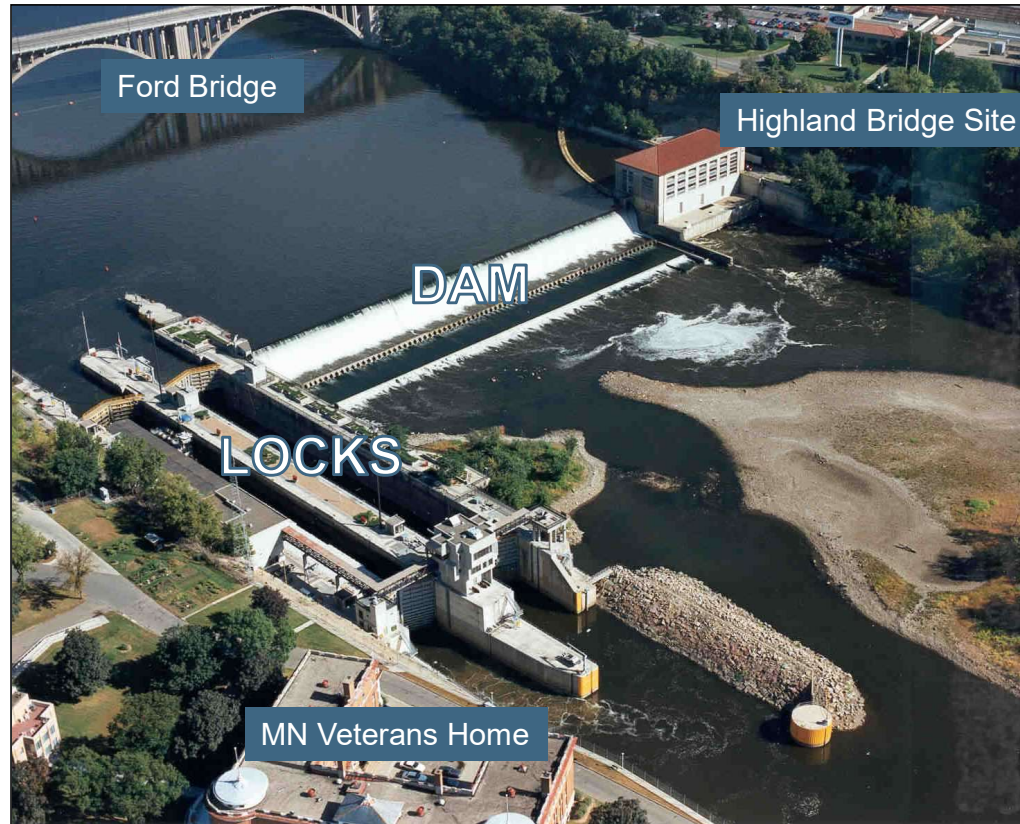


- Open to navigation- primarily recreational users who portage around USAF or commercial passenger boats
- **Corps**
 - Operates dam 24/7
 - Routine maintenance and security





LOCK AND DAM 1



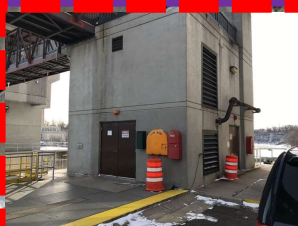
PRIMARY STRUCTURES AT LD1



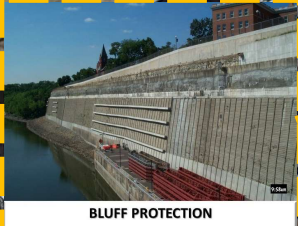
DAM ENTRANCE BUILDING
CONSTRUCTED 1983
375 SQUARE FEET



SERVICE BUILDING
CONSTRUCTED 1983
2560 SQUARE FEET



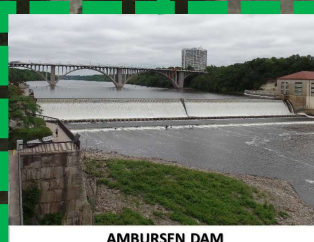
UTILITY STORAGE BUILDING
CONSTRUCTED 1983
540 SQUARE FEET



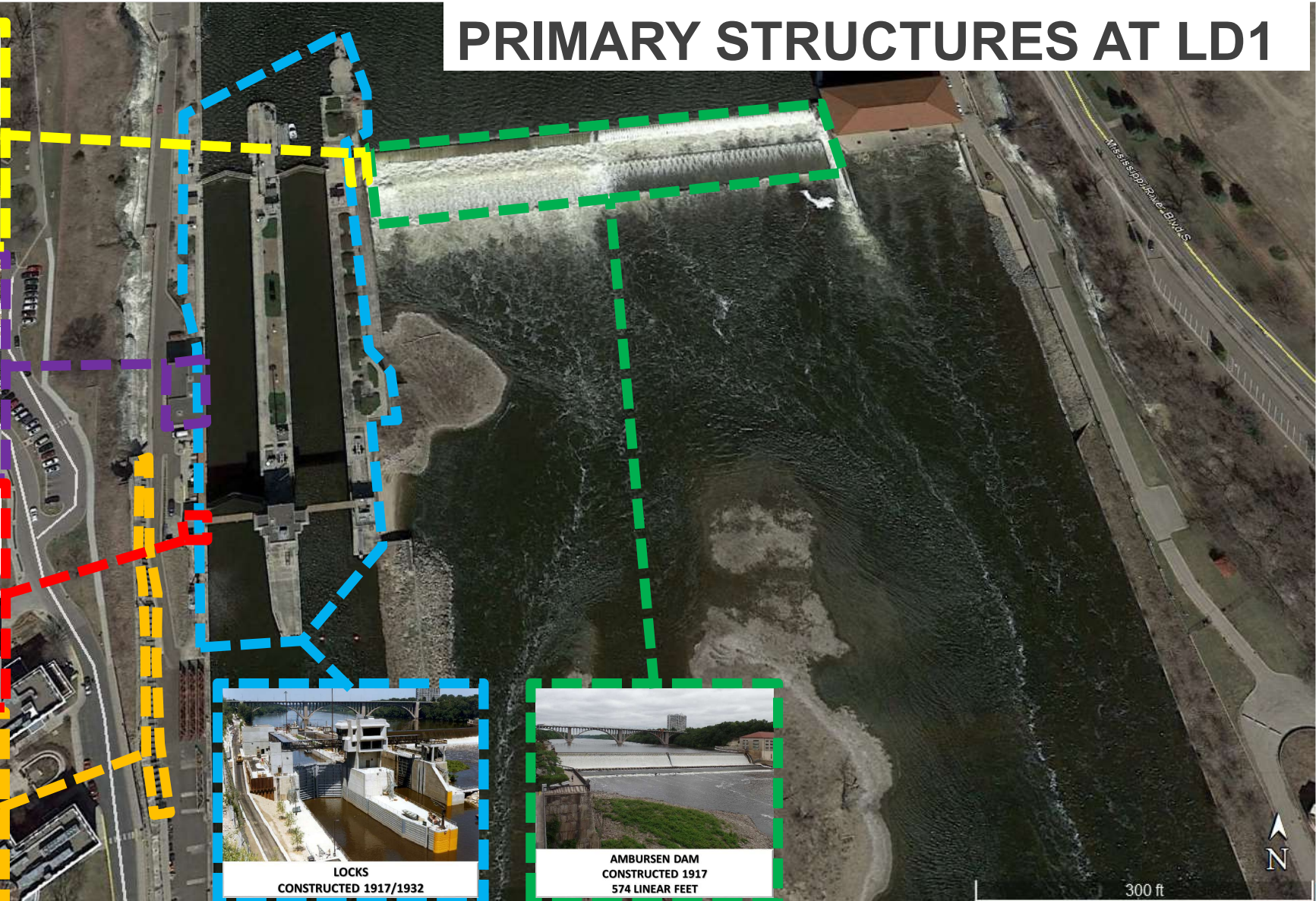
BLUFF PROTECTION
CONSTRUCTED 1964



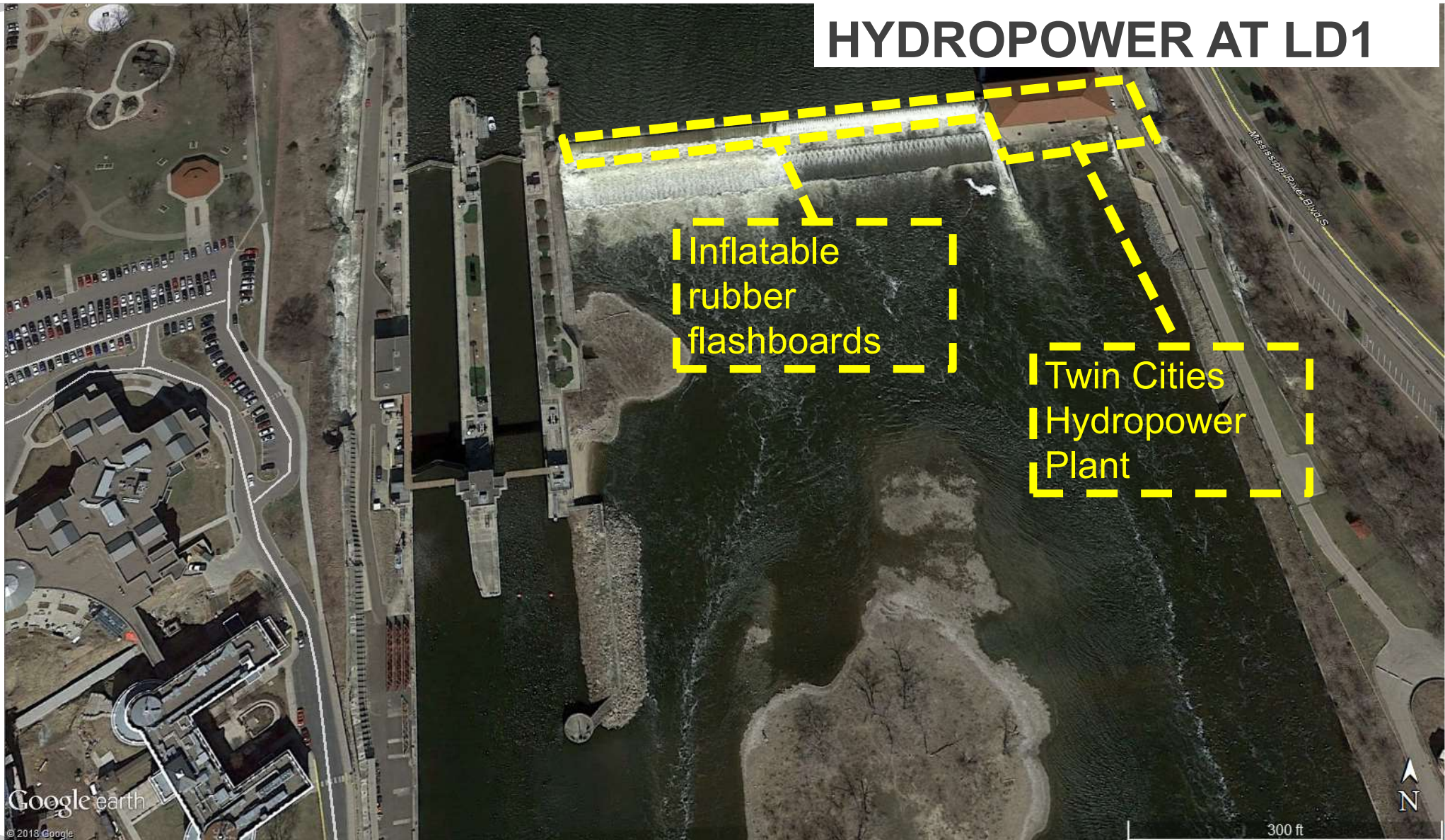
LOCKS
CONSTRUCTED 1917/1932



AMBURSEN DAM
CONSTRUCTED 1917
574 LINEAR FEET



HYDROPOWER AT LD1





LOCK AND DAM 1 STATUS

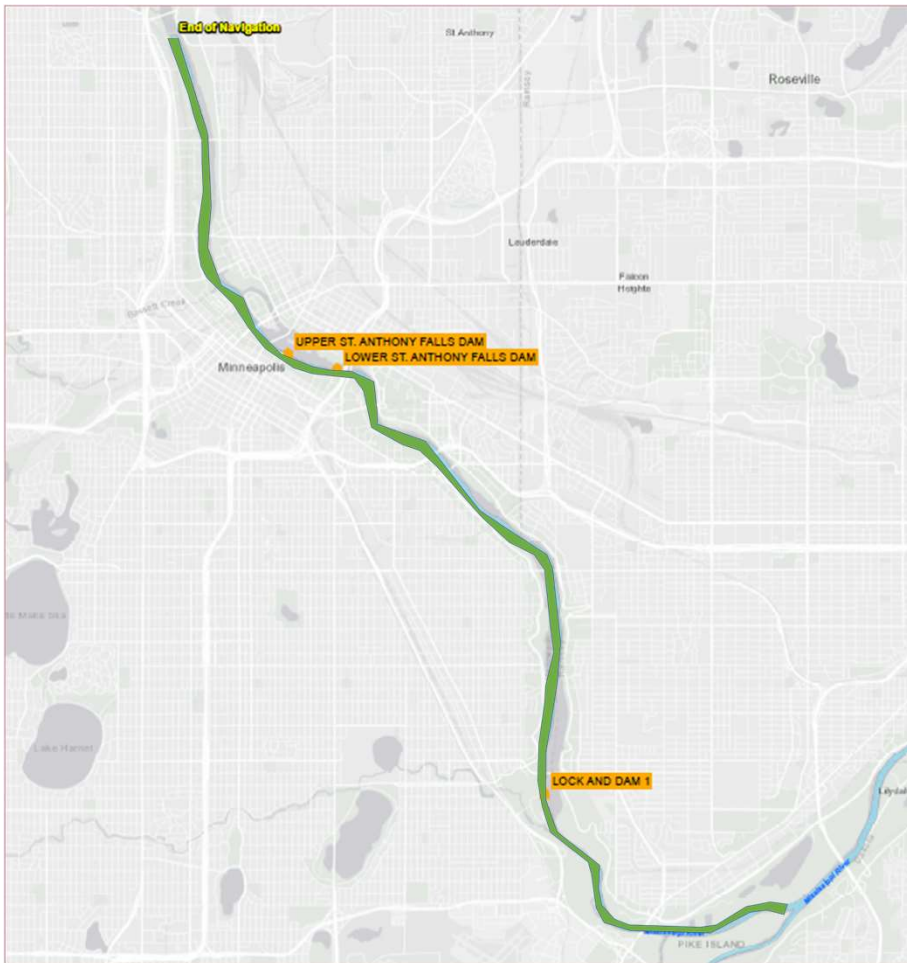
15



- Open to navigation- users are primarily recreational users or commercial passenger boats
- **Corps**
 - Operates Lock and Dam
 - Routine maintenance and security
 - Dredges pool 1 for navigation (lower priority)



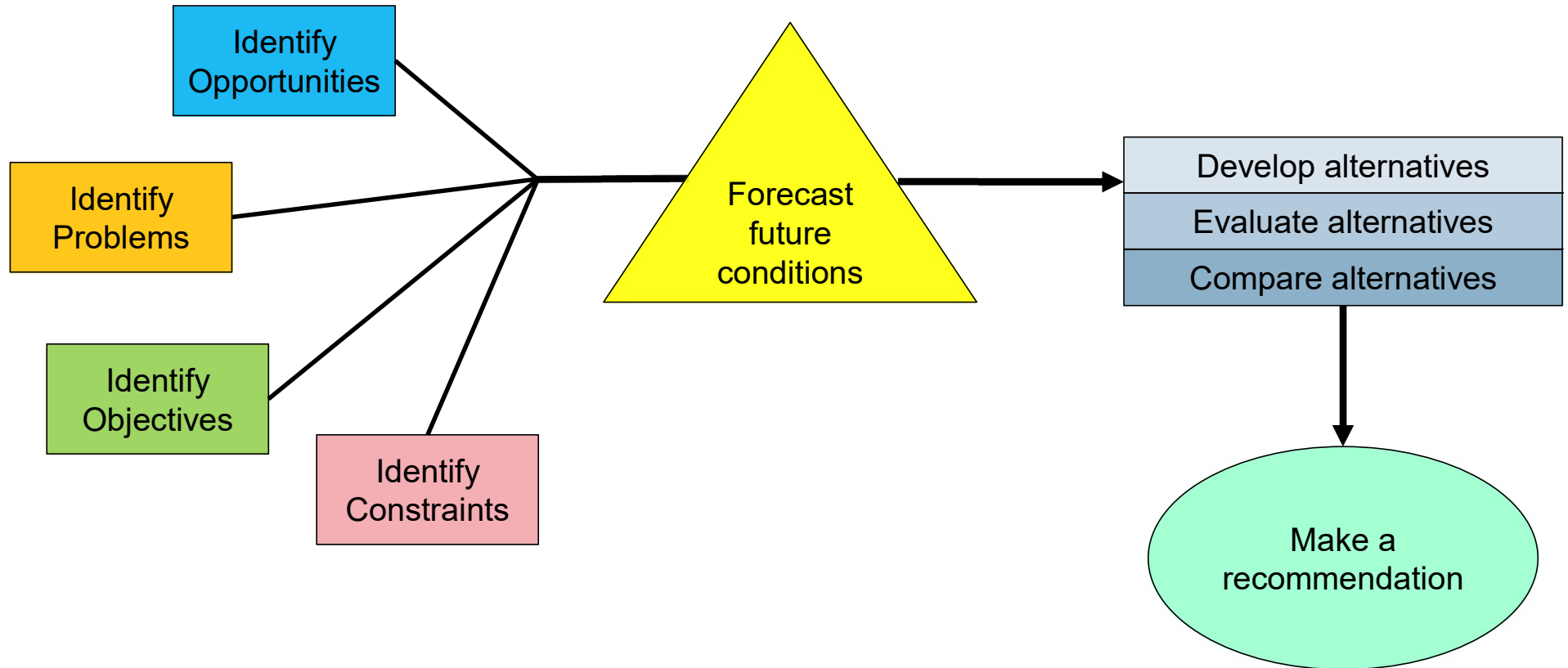
NAVIGATION CHANNEL



- Maintenance dredging of the nine-foot navigation channel is authorized, historically been required in this area
- Navigation channel is still authorized, but this area is lower priority for maintenance
- Disposition study will evaluate if it is still in the federal interest to maintain the navigation channel
- Study may recommend deauthorization of the navigation channel



THE STUDY PROCESS





SCENARIOS

No Action

Full disposal

Partial
disposal

Modify locks
& dams

Removal of
locks &
dams

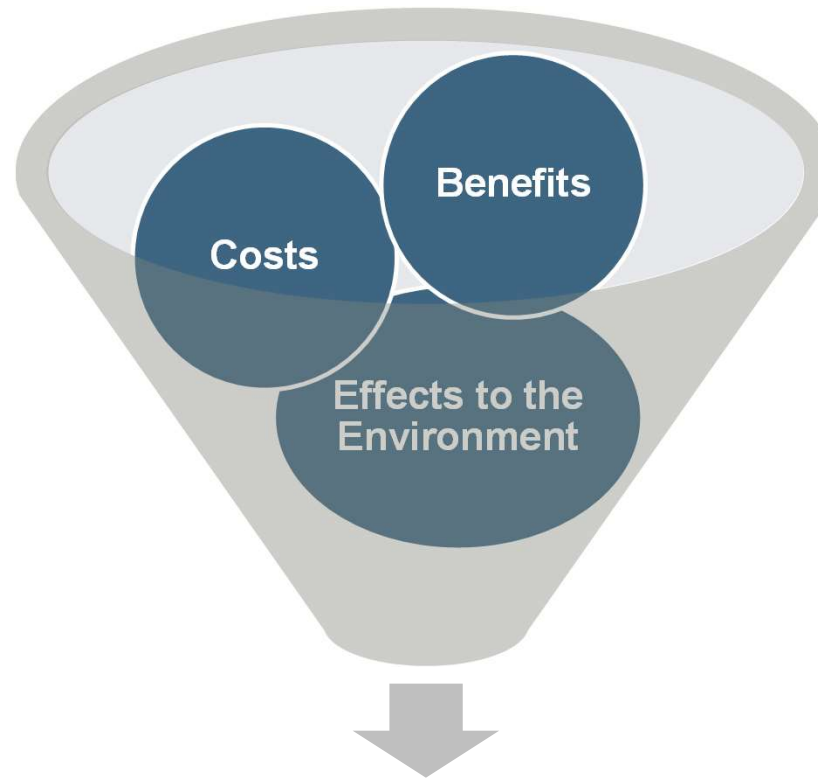
New purpose for
locks & dam
(new authorization)

Deauthorize
Navigation



EVALUATE SCENARIOS

Evaluate alternatives



Compare alternatives

After gathering input,
for each alternative we:



OUTCOME OF STUDY

20



- After comparing alternatives and evaluating environmental effects the Corps makes a recommendation.
- Recommendation is summarized in a draft report and put it out for public review.
- The input gathered is incorporated and the final report and recommendation is sent to Congress.

**Recommendation
to Congress**

Possible recommendations:

No Action

Full disposal

Partial
disposal

Modify locks
& dams

Removal of
locks & dams

New purpose
for locks &
dam

Deauthorize
Navigation

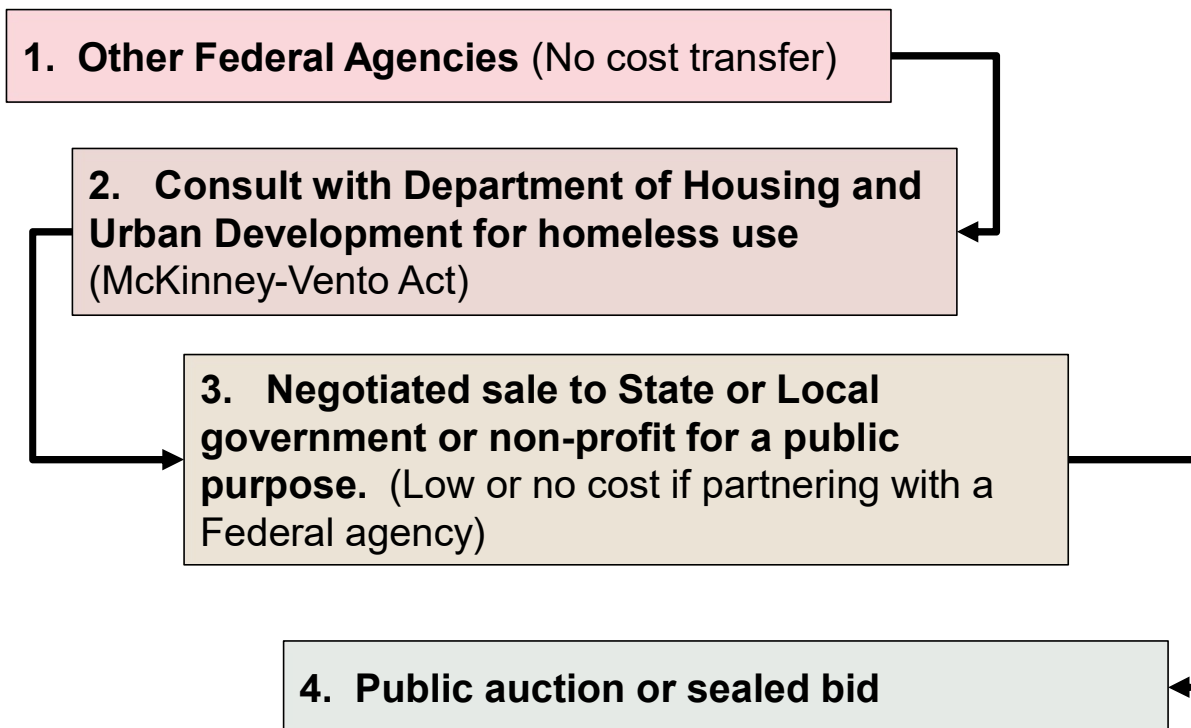


DISPOSAL OF FEDERAL PROPERTY PROCEDURE

21



Federal property disposal is carried out by the General Services Administration





SCOPING



Public Input



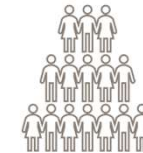
Ecological Impacts



Tribal Consultation



**Affected
Environment**



Social Impacts



Economic Impacts



NATIONAL ENVIRONMENTAL POLICY ACT (NEPA)



- Clean Air Act
- Clean Water Act
- Environmental Justice Executive Orders
- Endangered Species Act
- Section 106 of the National Historic Preservation Act
- Contaminated material and substances
- Migratory Bird Treaty Act

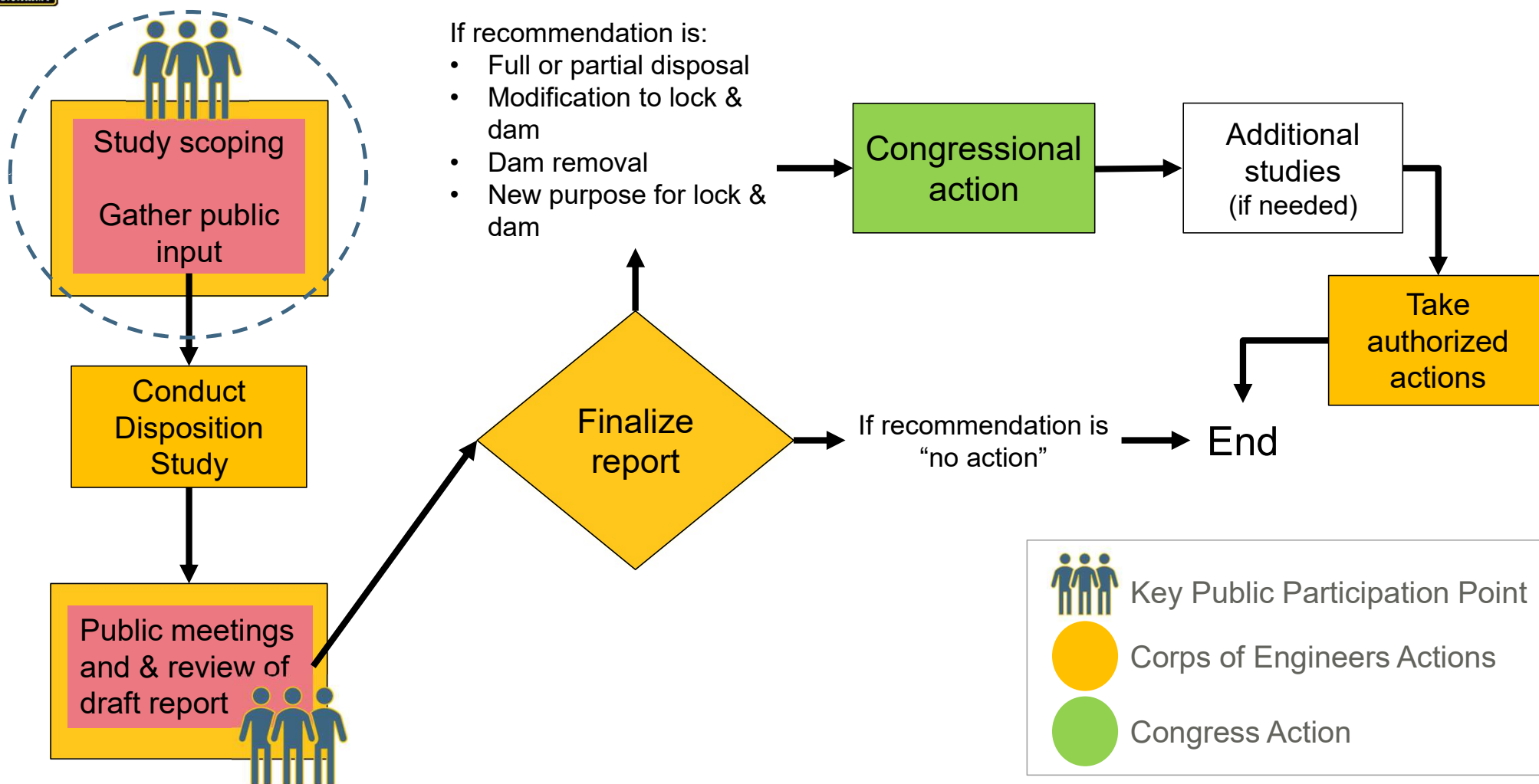
- Federal Flood Risk Management Executive Order
- State Environmental Laws
- Local Environmental Laws

Additional NEPA documents (like an Environmental Impact Statement, or EIS) may be required in the future, depending upon the recommended action, such as:

- Removal or partial removal of the structure
- Alterations/additions to the structure



NEXT STEPS





STUDY SCHEDULE

25



Key Step	Date
Initiate study & Disposition Study Scoping	Fall 2022
Conduct study - Gather public input, collect data	2022 – 2023
Develop draft report with Environmental Assessment	2023 - 2024
Public meetings, review of draft report	Fall 2024
Comments on draft report due	Fall 2024
Submit final report for approval through Corps	2025
Congressional Action (if required)	To be determined



Key Public Participation Point



PROVIDE INPUT & STAY INFORMED

26



LEARN MORE

www.mvp.usace.army.mil/MplsLocksDisposition

ATTEND 2022 SCOPING OPEN HOUSES

- 11 October 6-8pm: Highland Middle School Open House
- 14 October 2-6pm: Lock and Dam 1 Open House
- 15 October 10am-2pm: Lock and Dam 1 Open House
- 25 October 6-8pm: Dowling Elementary Open House

ATTEND FUTURE PUBLIC MEETINGS & REVIEW DRAFT REPORT

Learn of events and report through the St. Paul District website or by following social media channels

- facebook.com/usace.saintpaul
- twitter.com/StPaulUSACE





SUBMIT YOUR QUESTIONS OR INPUT



Email questions and comments to:

MplsLocksDisposition@usace.army.mil

Project website:

www.mvp.usace.army.mil/MplsLocksDisposition

Comments due by November 25, 2022